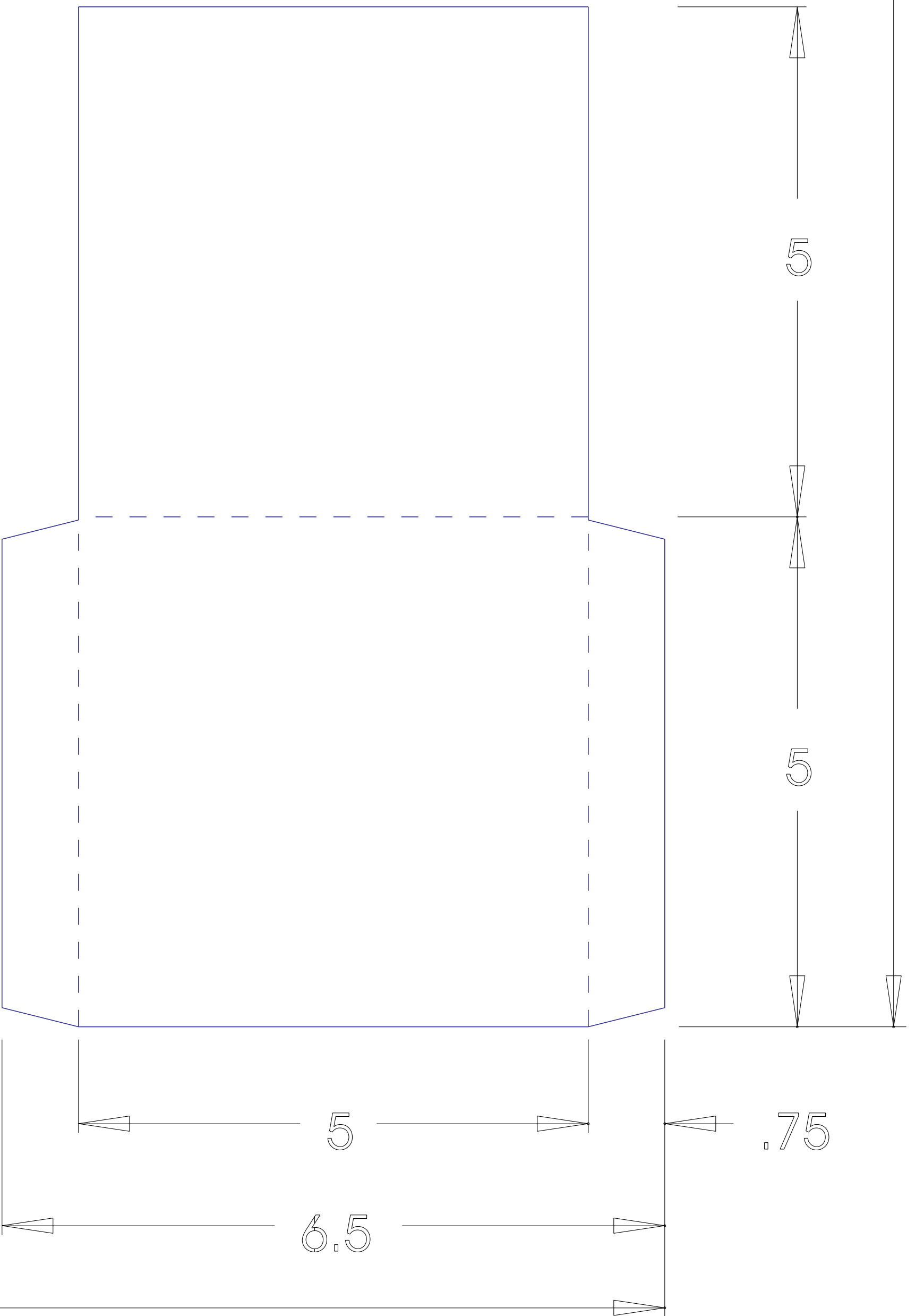
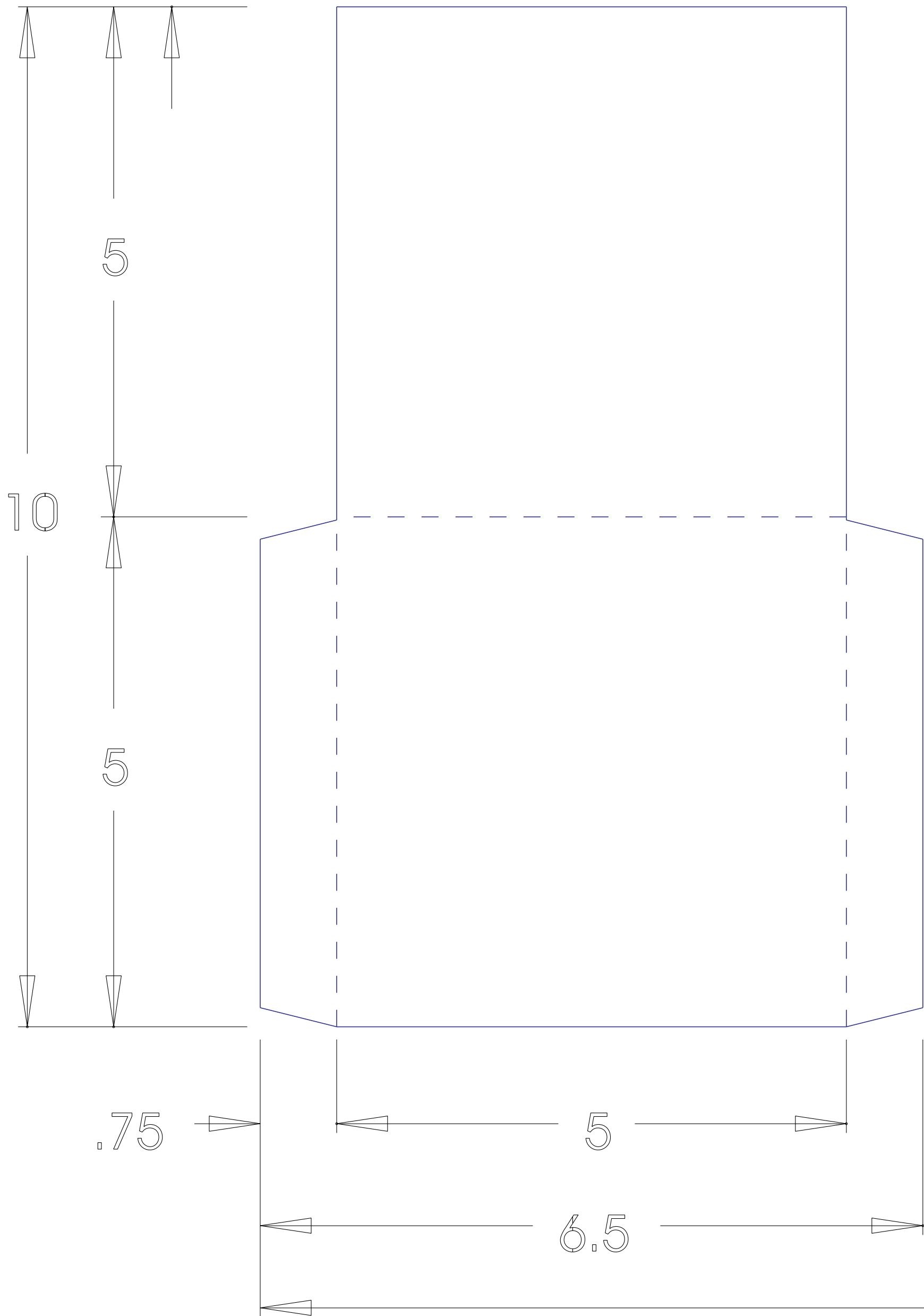
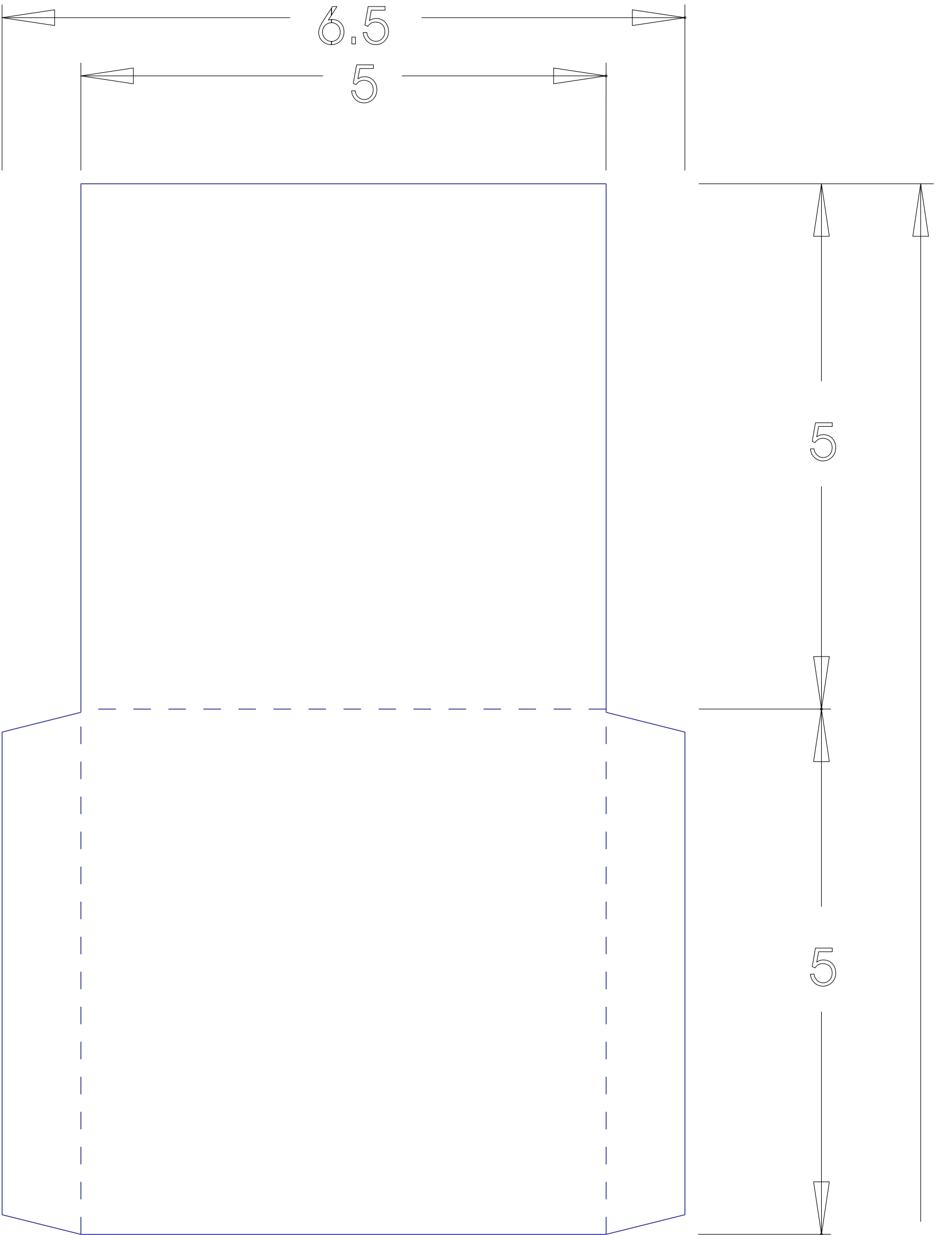
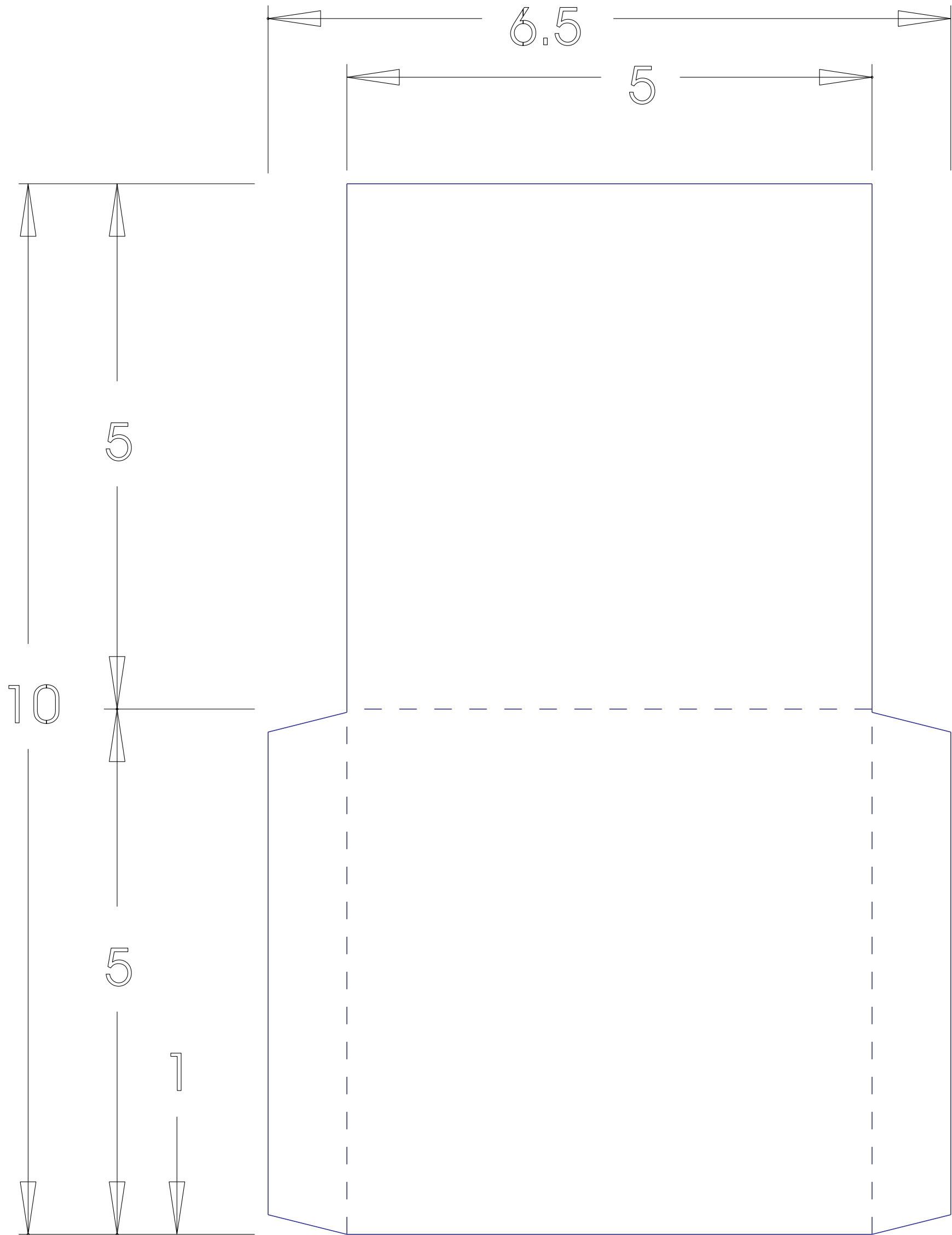


Notes to Designer:  
• Do not modify the keyline layer or change page size of the .eps file.  
• The keyline will not print on your folder.  
• Modifications will corrupt the file.  
• Add your art to the "artwork" layer.  
• Business Card slits that are not required may be removed from the layer.

Because of the sheet size, your job will be printed 4 up for cost effeciency.



21

15